



July 19-21, 2023 | Westin Downtown | Denver, CO



Driving progress for meaningful environmental outcomes.

Global EMFS shares proven and emerging market mechanisms, policies, data and trends, monitoring and tracking of progress to support and showcase ready and available solutions that can be implemented now, are scalable, quantifiable, and sustainable in the long-term.



Connecting voluntary, regulatory, and program-driven markets across carbon, water, biodiversity, and finance around the world.

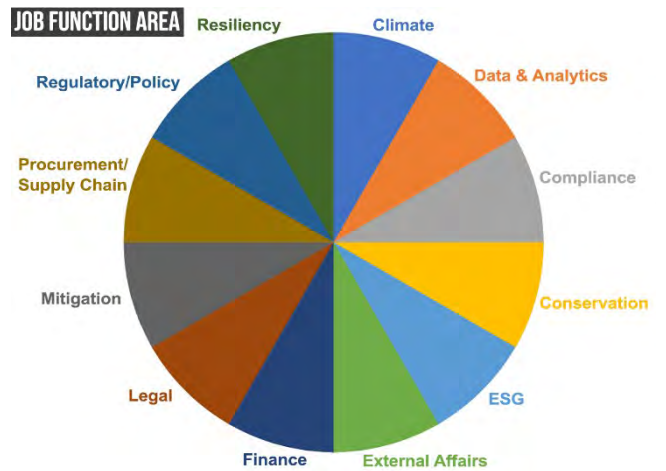


Engage in-person and virtual leaders of change and implementation across carbon, water, biodiversity, and finance.

Board Chairman and Directors, Presidents & CEOs, CFOs, CIOs, Partners, Principals and Executive Directors

Global, National, Regional and Local Chief Officers, Heads, Executive and Senior VPs, VPs, Senior Leads, Directors, and Managers

Senior Government Administration Officials, Directors, and Managers



SUPPLIERS	BUYERS	INVESTORS	GUIDING FRAMEWORKS
<ul style="list-style-type: none"> - Credit Exchanges & Trading Platforms - Verifiers - Mitigation/Conservation Bankers - Data and Technology Innovators - Bond Rating and Insurance Agencies - Natural Asset Accounting / Appraisers - Real Estate Brokers, Land Appraisers - Landowners 	<ul style="list-style-type: none"> - Corporations - Public Sector - Land Developers - Energy & Utility Providers - Infrastructure Developers 	<ul style="list-style-type: none"> - Investment Funds - Public Funders - Impact Investors - Foundations 	<ul style="list-style-type: none"> - Policymakers - Framework Developers - Standards/Protocol Developers - Regulators

ACROSS INDUSTRY SECTORS

Aerospace Agriculture Chemical Communications Consumer Products	Energy Fashion and Beauty Finance and Economic Food and Beverage Manufacturing	Mining Pharmaceuticals Technology Transportation Others
---	--	---



Rotating around the world on an annual basis, Global EMFS is a one-of-a-kind in-person and virtual event that connects and informs voluntary, regulatory, and program-driven markets across carbon, water, biodiversity, and finance -- and across industry sectors, resource agencies, providers and supporters of solutions, impactors, and funders.

High-level leaders of change and implementation joining:

- Designing, exploring, implementing carbon, water, biodiversity, ESG or investment goals.
- Seeking quantifiable environmental outcomes with economic and public benefit.
- Offering solutions to meet carbon, water, biodiversity, ESG and/or investment goals.
- Developing and/or implementing policy to support sustainable environmental outcomes.
- Looking to understand the different market mechanisms and opportunities.
- Innovators in process, data, and measurement.
- Involved or interested in Nature-based Solutions (NbS).



PARTNERS are recognized leaders in environmental markets and finance and have a shared vision for this important summit.

The Summit Supports its Partners

- Displays Partner’s logo w/link on Global EMF website
- Partner Logo in materials and marketing emails, social media and at Summit

Partners Support the Summit

- Display Summit logo w/link on Partner website at your option
- Share Summit via email, social media, and other ways
- Provide speaker support as needed

Special Partner Opportunity!

Water Scarcity Traveling Art Exhibition to Launch at GEMFS!

By renowned and award-winning Artist David Brewster and sponsored by:

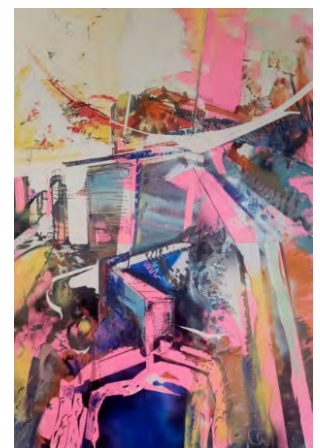


EARTH RECOVERY PARTNERS



JT&A, inc.

Join the above-listed sponsors of the Art Exhibition and be recognized in GEMFS program, and where the Art Exhibit travels in 2023, 2024 and beyond! Add your donation of \$1,500++ to any funded Partner level with 100% of your donation going to the Exhibit. Plus added recognition through GEMFS and the launch event. **See the Partner page on website for details.**



Hoover Dam 64” x 47”

environmentalmarketsandfinancesummit.com



Global EMFS offers multiple opportunities to gain exposure and engage with high-level attendees...



- Expert-led Roundtables
- Outdoor Program
- Networking Breakfasts & Breaks
- Expert Panels
- Lunch Engagement
- Virtual Audience Reach
- Exhibits and 6' Ads in high-exposure areas



To explore all opportunities available to Partners or a customized opportunity, please contact carlene@jtainc.com; 703-338-6636.

Gain Exposure as a Leader around the World in Denver and via the Live Stream!

BENEFACTOR PARTNER \$5,000

2 registration passes | choice of exhibit space *if available* or extra registration | shared partner highlight in marketing email, logo on website, materials, and marketing emails and signage.

ADVOCATE PARTNER \$7,500

3 registration passes | choice of exhibit space *if available* or extra registration | **recognized as host of daily networking break** | **recognized on screens in all sessions** shared partner highlight in marketing email | logo on website, materials, marketing and signage | **verbal recognition in Opening Session.**

PATRON PARTNER \$10,000

4 registration passes | choice of exhibit space or 6' Standing Ad or extra registration | **recognized as host of networking continental breakfasts** | **recognized in a session of choice** | **opportunity to provide notepads or pens w/ your logo for tables** | recognized on screens in all sessions | highlight in marketing email, spot on website, materials, in marketing and signage | verbal recognition in Opening Session.

CHAMPION PARTNER \$15,000

4 registration passes | choice of exhibit space or 6' Standing Ad or extra registration | **recognized in a session of choice with Screen or Video Ad** | **recognized on screen in all sessions** | **Champion Partner highlight in marketing email** | Champion spot on website, materials, in marketing and signage | verbal recognition in Opening Session.

LEGACY PARTNER \$25,000 +

7 registration passes | choice of exhibit space or 6' Standing Ad or extra registration | **logo on all registration confirmation emails all attendees receive** | recognized in a session of choice with Screen or Video Ad | **Host of Welcome Social** | recognized on screen in all sessions | Legacy Partner highlight in marketing email | **Legacy top spot on website**, materials, in marketing and signage | recognized in Opening Session.

SUSTAINING PARTNER

For governments and NGOs who wish to support *with or without a financial contribution*. Your logo on the GEMFS website, materials, marketing emails. More depending on financial contribution. Partner shares GEMFS with colleagues, members, subscribers. Consider placing GEMFS logo w/link on your website and in Partner calendar.

OTHER OPPORTUNITIES

Display / Exhibit (1 reg, 2- 50% registrations, display space, company highlight) **\$2,500**

Tech/ Data Listing in Friday Tech & Data Connect (must be registered) **\$250 - \$500**

Sponsor Water Scarcity Art Exhibit – **add \$1.5K+ to any funded level**
by renowned artist David Brewster *100% of this goes to the Art Exhibit*



Looking for a custom Level? Email carlene@jtainc.com
www.envmarketsandfinancesummit.com